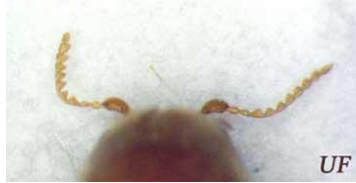


# Cigarette & Drugstore Beetle

Scientific Name: Lasioderma serricorne/Stegobium paniceum



*Cigarette Beetle*



*Drugstore Beetle*

## Identification Tips:

<b>Color</b>	Cigarette: yellowish-to reddish-brown; Drugstore: reddish-brown
<b>Legs</b>	6
<b>Size</b>	1/10 inch long
<b>Identifying Characteristics</b>	Cigarette: oval-shaped; head bent downward sharply (humpbacked appearance); wing covers are smooth with antennal segments uniform and saw-like. Drugstore: head deflexed (no distinct humpbacked appearance); wing covers have faint lines running lengthwise with antennae having three enlarged segments at the tip

## Characteristics of this insect:

- Cigarette beetles commonly infest dried tobacco and tobacco products. They also infest a host of dry food products and may also damage the leaves and bindings of books when feeding on the paste or overstuffed furniture when infesting the straw, hair, etc. Drugstore beetles feed on many drugs in the pharmacy such as laxative teas and even strychnine. They also infest a host of dry food products
- Cigarette females lay about 30 eggs in a three week period. Drugstore females lay eggs singly in foodstuffs
- The cigarette beetle life cycle lasts 70 to 90 days, with perhaps 5 to 6 overlapping generations per year in warm localities with only one generation per year in more temperate regions. The drugstore beetle life cycle requires 7 months, with perhaps 4 generations per year in warm localities with only one generation per year in cooler climates
- Cigarette adult beetles are strong fliers while the drugstore adult beetle can fly and is attracted to light sources

## Is this insect harmful to me?

This pantry pest contaminates food which makes the food unfit for human consumption.



### *Why are they in my structure?*

Unfortunately, you purchased a product where this problem was packaged into the product during the manufacturing process. Almost all dry, stored products for human consumption as well as a host of other products can be infested. Once inside, this insect will branch out from infested source and reproduce in surrounding cracks and crevices which makes control extremely long and difficult.

### *Can I treat the problem myself?*

Due to the complexity of this insect and the arsenal of products that must be incorporated into the treatment, it has been our experience that most homeowners are unsuccessful at eliminating this problem. Also, homeowners often utilize products that are ineffective or apply them not in accordance with labeling and state laws. Please remember that products may be harmful to you and your family if they are misused or misapplied.

### *What can Apex do for me?*

An Apex representative will spend time interviewing the homeowner in order to ascertain where the presence of the cigarette or drugstore beetle is located. That being said, Apex can provide you with a one-time application or a preventative maintenance plan.

**One-Time Treatment:** An interview with the homeowner is conducted along with a detailed inspection of both the inside and outside of the structure. Time is spent determining the most effective application and then a targeted application of product is made to rid your home or surroundings of these unwanted guests. A 30-day guarantee is provided with free service calls if the monthly prevention plan is not chosen.

**Pest Prevention Plan:** Due to the difficulty in controlling this insect, Apex recommends monthly inspections and treatments to be performed to keep your dwelling pest free year around. Free service calls are provided whenever a pest outbreak occurs. Being that a variety of other general insect problems are covered, this is a cost effective way to maintain the integrity of your home and is the **recommended treatment of Apex.**

### *Is the treatment safe for my children and pets?*

Since 1969, Apex has always operated with one goal in mind: *“The safety of people, pets, places, and the environment is our first concern.”* Therefore, we will utilize crack and crevice and spot applications, baits, monitors, habitat modification recommendations, and natural products as a method of treatment when possible. When conventional treatments are required, our licensed technicians are trained to apply the products so as to not pose a problem to people or their pets. All conventional products are EPA registered and our technician will advise you of any necessary precautions.



### *What should I do now?*

Call our office at 1-800-MUG-A-BUG (1-800-684-2284) to discuss your problem with a knowledgeable customer service representative. Otherwise, sign up for a free online quote today!

*Cigarette and Drugstore beetle images courtesy of the University of Florida (<http://www.entnemdept.ufl.edu/creatures>)*

<http://www.apexpestcontrol.net/> 1-800-MUG-A-BUG